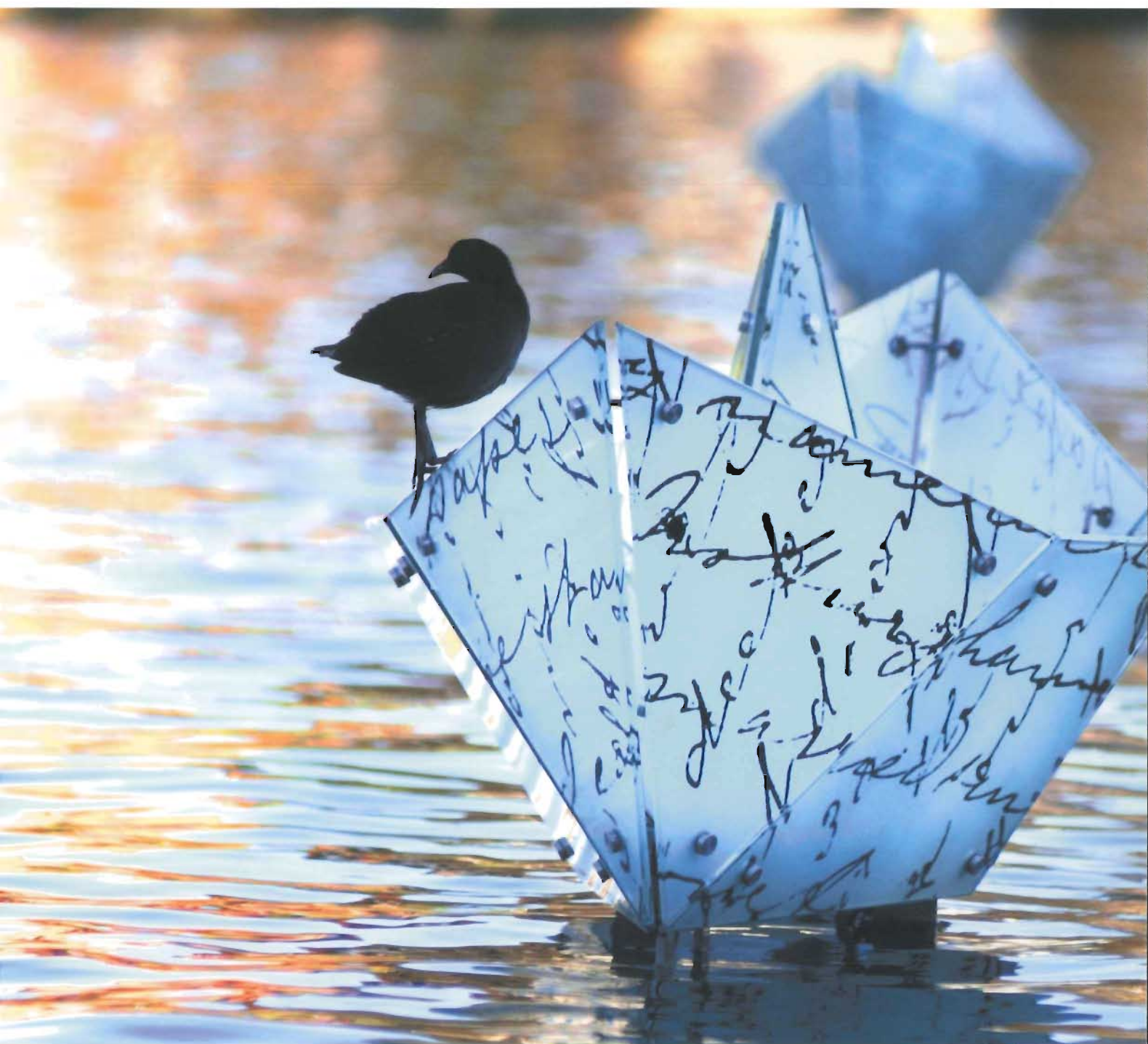


landscape

architecture australia



sites of significance from around australia innovative installations enduring landscapes residential round-up green walls in japan wind farms monastic master plan ephemeral art

state of their art

Thylacine is a collaborative, flexible and fluid organization, drawing on visual and fine arts, craftsmanship, research, engineering, fabrication and project management in their practice. Recent and current projects show their output is a body of uncommon iconic works, bringing sound, light, thought and memory together and delivering powerful built works.

by neil hobbs



Thylacine Design and Project Management has been operating since 1999, based in Queanbeyan, New South Wales, and since 2003 in Richmond, Victoria. Directors Michel Starling and Caolan Mitchell share a background in fine arts and design. Initial projects concerned museum exhibit design, covering the gamut of the process: graphics, curatorial display, cabinet design and fabrication, lighting design and internal fitout to spaces. Some of these projects help generate continuing work, and can be seen in the built and/or exhibited form in the National Museum of Australia, the National Archives, and the Australian Institute of Sport, Canberra, the Australian Fossil and Mineral Museum, Bathurst, and the Australian Racing Museum, Melbourne. However, Thylacine have also developed a string of public art projects, connecting closely (and collaborating through the design process) with landscape architecture.

Built public artworks include Torrens River Walk, Adelaide, Bonegilla Soundscape, Victoria, and Taylor Square in Sydney. Also of interest are two projects under design

development in Canberra, due for installation towards the end of 2006.

Torrens River Walk

The site was a post-World War II migrant processing centre. Thylacine's approach references multilevel symbolism, picking up on the arrival/disembarkation process, and the symbolism of the break from old life to new, while also referencing concepts of invasion and cultural change. The folded "paper" boats float on the river, and are fabricated from glass and aluminium, with transferred images of letters home applied.

Bonegilla

Thylacine worked closely with Cox Architects and Planners (Melbourne office) to develop the soundscape at the visitor information centre built on the site of the former migrant processing camp of Bonegilla, used during the postwar years as a staging point for immigrant arrival into Australia from Europe. The main feature is a listening wall. Heard from a distance a gabble of voices dominates, with individual voices hard to distinguish; however, on closer approach one is drawn

to an individual spoken history of personal experiences formed by the site. The sounds react to the movement of the listener, as one moves along the wall and enters the building.

Thylacine were responsible for the concept development and implementation of the soundwall, graphics, video loop production and way markers sited at various points around the old camp and former building locations. Thylacine were told by Cox that their input to the project added 300 per cent to the finished work!

Taylor Square

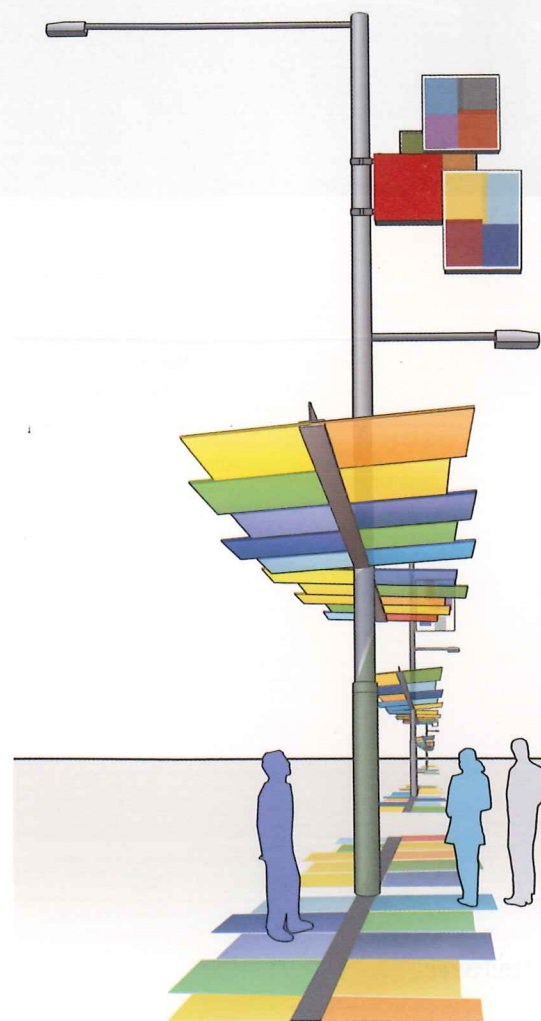
Thylacine worked with Tract on the Taylor Square project, in Sydney's Darlinghurst. Six precast concrete pods act as outdoor exhibition spaces, fixed to the pavement and sealed with an impact-resistant, weatherproof glass porthole. The original artwork brief was to provide a timeline of the fabric of a too-well-used public space (in that some sections of society never left), as part of wider public realm improvements following the diversion of through traffic to the below-ground Eastern Distributor. Due to the single point

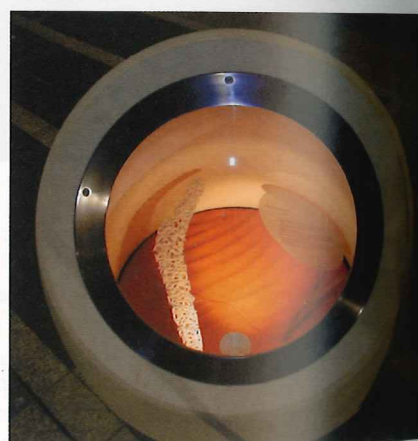
designer Thylacine Design and Project Management.

photographers Italo Vardaro and Thylacine Design.

above folded "paper" boats with impressions of letters from home are central to the Torrens River Walk installation.

right active light boxes are part of the Childers Street upgrade with EDAW Australia Landscape Architects.





top a listening wall is part of the visitor information centre at the former migrant processing camp of Bonegilla.

above outdoor exhibition spaces at Sydney's Taylor Square project in collaboration with Tract.

perspective and narrowing of focus, the pods act more like time capsules. Current displays depict occupation of the site by the original Eora people to present-day transvestites. The pods can be used as a changing gallery space, and Thylacine have an ongoing input into a curatorial exhibition program.

Childers Street, Canberra

Thylacine have proposed active light boxes within the upgrade of Childers Street (with EDAW Landscape Architects). The theme for the artworks is synaesthesia – a phenomenon where the senses overlap, and visual stimuli are perceived as taste, and sound tones are perceived as colour. The Childers Street works will blend the senses of sound and light, allowing motorists, street sweepers, pedestrians and cyclists to influence the output of the light and sound boxes. A

direct transcription of Percy Grainger's *The Walking Song* is proposed to create a sequence of coloured glass panels and their progression along the length of the street – the theme song chosen as a light-hearted reference to pedestrians and the notion of street movement.

Thylacine chose Grainger because he was an Australian-born musical genius, predicting and developing many twentieth-century musical concepts, and experimenting with electronic instruments from 1937.

Lake Ginninderra, Canberra

The south-western edges of Lake Ginninderra in Belconnen are undergoing a much-needed refurbishment. The existing public infrastructure dates from the mid-seventies, and, in Belconnen, that translates



to appalling site planning, tragic architecture, unimaginative public landscaping and poor engineering, resulting in poor water and land quality. That is all changing, and Thylacine are contributing to the revitalization of the precinct, along with an ACT Government-funded arts and cultural centre, extensive public area refurbishment and changed land use policies.

Thylacine's proposal is a work in progress, consisting of perforated and coloured steel tubes able to sway in light breezes. The tubes will perform a kinetic piece, sited well into the lake, with night lighting and sound chimes to add noise, light and movement to the putative arts precinct. ■

above the Lake Ginninderra installation will consist of coloured perforated steel tubes which will sway in the breeze.